

# Mr. and Mrs. F. L. Schlagle Library, an Environmental Learning Center

## School Programs Guide

## Preschool & Elementary



Mr. and Mrs. F.L. Schlagle Library  
4051 West Drive  
Kansas City, KS 66109  
913-295-8250, option #2  
[www.kckpl.org](http://www.kckpl.org)  
[flsinfo@kckpl.org](mailto:flsinfo@kckpl.org)



# Scheduling Norms

- **F. L. Schlagle Library is unable to schedule programs on Mondays.**
- **Please schedule your program at least one month in advance.**
- **F. L. Schlagle Library can only accommodate your class once a semester, on site for two hours**
- **F. L. Schlagle also offers outreach programs that can be utilized once a semester for one hour.**
- **F. L. Schlagle Library offers over 30 different programs. We are only able offer classes that are listed on this document.**
- **Each program needs to have at lease ten students for F. L. Schlagle Library to schedule your class.**
- **F. L. Schlagle Library needs to know if any children have special accessibility needs IN ADVANCE.**



Mr. and Mrs. F.L. Schlagle Library  
4051 West Drive  
Kansas City, KS 66109  
913-295-8250, option #2  
[www.kckpl.org](http://www.kckpl.org)  
[flsinfo@kckpl.org](mailto:flsinfo@kckpl.org)



# Helpful Information

## To Schedule a Program:

**Call** 913-295-8250x2 and ask to speak with our program scheduler and Branch Manager, Patrice Gonzalez. You may also email her at pgonzalez@kckpl.org. Please have the following information ready when you call:

- Program choice
- School name, address, and phone number
- Grade level and number of students
- Preferred date and time with alternates  
(in case first choice is not available)
- Any students with special needs

**Note:** To help ensure availability, please call to schedule your program at least **one month** prior to the date of your choice.

**Prior** to your program you will receive an email to confirm your field trip or outreach program. It will be through this email communication that we let you know of any additional information regarding your program.

**Weather Accommodations** Many of our programs involve outdoor time. If severe weather threatens, staff will be prepared with alternative indoor activities for your program.

**Rescheduling** of programs can be done pending calendar availability.

**Cancellation of a Scheduled Program** Should you need to cancel a program you have scheduled, please notify us within 48 hours of your program's date. If the program must be cancelled due to inclement weather, park closing, or staff emergency, we will work diligently to reschedule your program at a later date.

## Pre-visit Information:

**Arriving on time is crucial for a successful program.**

**Please arrive 10 minutes prior to the start of your program** for line-up and group assembly.

**Dressing** for the weather is very important. Since the majority of our programs include an outdoor portion, students and adults should dress for the conditions. Everyone should wear shoes that completely enclose the foot. Please no flip-flops, or sandals.

**Name Tags** that can be easily read by the staff are encouraged for students and teachers.

**Adult to Student Ratio** A few programs may call for a 1:4 ratio. Please plan to bring extra adults to meet this requirement. We ask that attending adults directly assist with the program to enrich the children's experience. We also ask that the adults answer questions only when called upon and remove themselves from the group if needing to converse with others or to use their phone.

**Cell phones** Please be sure that all cell phones are silenced and safely stowed away prior to arrival.

**Shelter Houses** are great places to have lunch & let your students play. They can be reserved through the Wyandotte County Parks and Recreation office by calling 913-573-8327. Reservations are free for Wyandotte County schools. Shelter 2 is the most popular because it is next to the big playground near the Leavenworth Rd. entrance. Shelter 6 or the Beach shelter don't have a playground, but are nearest the library.

**Kansas State Standards and Benchmarks** are met or exceeded in each program.

## Student Behavior and Discipline:

All students are expected to behave as they would in the classroom. If we have a significant problem with one or more students, we reserve the right to have that (or those) child(ren) removed from the program. It is the responsibility of the teachers and adult chaperones to provide control of their group during the entire program. We reserve the right to ask students to leave if they are disrespectful of staff or volunteers or destructive to property or nature.

## Program Flexibility:

We are capable of adapting most programs to fit other grade levels.

## Transportation Assistance:

For schools within Wyandotte County, we are able to provide up to \$100 per school, per semester, to assist with the cost of busing. Please ask if funding is still available for your school when scheduling a program. Reimbursement rates may vary depending on the type of field trip.

## Important Note to Educators and Parents:

Young children have an innate sense of wonder about the natural world that we, as adults, have the responsibility to nurture. We ask that you set aside any personal anxieties and biases regarding snakes, insects, and spiders before, during and after your visit. It is important to us that the children be able to make up their own minds about what is good or not-so-good about the natural world.

# Program Information At-A-Glance

Kansas State Standards and Benchmarks are met or exceeded in each program.

To ensure that each child has a meaningful hands-on experience at the library and to meet Kansas State Science Standards, we will break up large classes of students into smaller, manageable groups. If your group consists of more than 25 students, we will break them into two groups and typically have an indoor and outdoor component, in which every student will participate in both activities. On outreach, we typically visit each classroom individually.

Program	Length	Max # Students	Grade Level	Available as Outreach
Trees for Tots	1 hour	32	Pre-K	Yes
Rot n' Roll	1 hour	32	Pre-K - 5th	No
My Senses Tell Me	1 or 2 hours	32 or 60	PreK - 5th	No
Incredible Journey	1 or 2 hours	32 or 60	PreK - 5th	No
Sun, Moon, Stars	1.5 hours	30	1st-3rd	No
Wild About Plants	1 or 2 hours	60	PreK - 5th	Yes
Animal Tracks and Clues	1 or 2 hours	60	PreK - 5th	No
Incredible Insects	1 or 2 hours	60	PreK - 5th	No
Habitats	1 or 2 hours	75	PreK- 5th	No
Amazing Adaptations	1 or 2 hours	60	PreK - 5th	Yes
Birdy Bodies	1 or 2 hours	30	PreK	Yes
Fun-damental Physics	2 hours	50	3rd-5th	No
State Symbols of Kansas	1 or 2 hours	60	Pre-K-5th	Yes
Sustainability—Refuse, Reduce, Reuse	1 or 2 hours	60	PreK- 5th	Yes
Fossilized in Time	1 or 2 hours	60	3rd-5th	Yes
Mindfulness in Nature	1 hour	30	PreK - 5th	No
“Rock-It” Science	2 hours	60	3rd-5th	No
Scaling the Solar System	1 or 2 hours	60	3rd-5th	No
Archery	1.5-2 hours	30	3rd-5th	No

\*Program length and number of students may differ for onsite/outreach programs and differing grade levels.

\*Please note, the majority of our field trip programs include activities that will be held outdoors, weather permitting. Other activities may be offered in the event of inclement weather.



“I have been bringing a class for three years. It’s a wonderful resource. The parents I brought had never been before and they were impressed with the facility and the program. Thanks for all you do!” - teacher from St. Agnes.

“I want to learn more so I can grow up and teach other kids about the different butterflies too.” - 5th grade Quindaro student.

# Programs to Explore

Kansas State Standards and Benchmarks are met or exceeded in each program.

On-site elementary programs are typically two hours in length. Outreach programs are one hour in length. Most programs include an outdoor component (on-site only), which is often spent on an accessible nature trail. Please dress appropriately!

## Amazing Adaptations

This program is for students who are studying animal relationships, food chains, and species specific adaptations. This program is taught through hands on exploration of pelts, skulls, skeletons, and other items.

Suggested grade levels: PreK - 5th



## Animal Tracks and Clues

People who study nature can learn about the various wildlife found in an area from the signs they leave behind. In this program students will explore the different ways animals can tell us where they've been and take home an animal track replica.

Suggested grade levels: PreK- 5th.  
Note: Track-making activity

## Incredible Journey

During this program, we will learn about the Earth's different water sources and the water cycle through interactive games and activities. See how a single drop of water makes its journey through the water cycle and learn about the impact humans have on water sources.

Suggested grade levels: PreK - 5th



## Habitats

Taught through hands-on games and activities, this program focuses on habitats found in Kansas and their importance to the animals and plants that are native to our state. They will also learn what they can do to help where they live!

Suggested grade levels: PreK - 5th



## State Symbols of Kansas

Can you name the organisms that act as our state symbols?

Students will be able to answer these questions and more as they explore the native flora and fauna of our state. We'll take a look at organisms that currently call the Sunflower State home.



Suggested grade levels:  
Pre-K - 5th



## Incredible Insects

Explore the world of those six-legged creatures we call insects! Students will search for insects, and study their life-cycles, morphology and diversity in our classroom.



Suggested grade levels:  
PreK- 5th



# Programs to Explore

Kansas State Standards and Benchmarks are met or exceeded in each program.

On-site elementary programs are typically two hours in length. Outreach programs are one hour in length. Most programs include an outdoor component (on-site only), which is often spent on an accessible nature trail. Please dress appropriately!

## Trees for Tots

Introduce your students to the cycle of life. In this hands-on program your students will explore how a tree grows, the parts of trees, and the importance of these organisms in our world.



**Suggested grade levels: PreK -K**

## Art in Nature

You can't spell Earth without ART. In this interactive and creative program children explore and discover art in nature through artistic creations both inside and outside of our library!



**Suggested grade levels: PreK - 5th**



## My Senses Tell Me

We learn about the world around us through the use of our senses. In this program your students will explore their five senses through interactive activities and experiments, and discover the sights, sounds, smells and textures we find outdoors.

**Suggested grade levels: PreK - 5th**



## Birdy Bodies

What birds are in your backyard? Through interactive play we'll identify 3 common birds and how each use their beak and feet to survive. We'll also explore with feathers, birdsong, and nests.



**Suggested grade levels: PreK - 5th**



## Rot N' Roll

Students will learn about the life cycles of a forest to better understand how decomposers contribute to the health of an ecosystem. We will explore a bugs eye view of the forest floor.



**Suggested grade levels: PreK - 5th**

## Wild About Plants

Students will discover the parts of plants, how plants grow, and their many uses through hands-on activities and outdoor exploration. Each student will get seeds to take home and plant.

**Suggested grade levels: PreK - 5th**

# Programs to Explore

Kansas State Standards and Benchmarks are met or exceeded in each program.

On-site elementary programs are typically two hours in length. Outreach programs are one hour in length. Most programs include an outdoor component (on-site only), which is often spent on an accessible nature trail. Please dress appropriately!

## Fossilized in Time

Students will learn what fossils are, how they are formed and what Kansas was like millions of years ago. Students will use hands-on exploration to learn about the fossils of Kansas and take home a plaster cast of one of those fossils.



## Sustainability - Refuse, Reduce, Reuse

Designed to teach the importance of sustainability, this program involves hands-on activities and demonstrations. It will equip students with tools to help protect our habitats and planet.



**Suggested grade levels: PreK - 5th**



## “Rock-It” Science

In this program students will learn about the rock cycle and will see examples of three types of rocks (sedimentary, metamorphic and igneous.) Your students will also become young geologists and identify rocks by studying their specific properties.

**Suggested grade levels: 1st - 5th**

**Not available as outreach**

**\*Schools are required to have extra adults for this program.\***



## Scaling the Solar System

This program introduces students to scales and models and how they are used to understand and compare the size and distance between the planets, the moon, and the sun.

This will include a one-hour session in the StarLab inflatable planetarium to learn about sky patterns, planets and stars.

**Suggested grade levels: 3rd-5th**  
**Not available for outreach**



## Sun, Moon, Stars

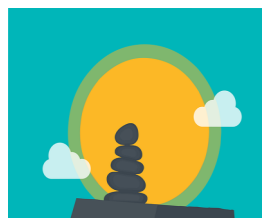
Using models, students will explore the phases of the moon, day and nighttime patterns and the size of objects in the sky. Students will also go into the StarLab to learn about patterns in the sky and moon phases.

**Suggested grade levels: K—2nd**  
**Not available as outreach.**

## Mindfulness in Nature

Students will practice mindfulness in nature by paying attention to how their minds and bodies experience and process feelings in the present moment. By combining meditative techniques with outdoor nature play, children will explore and observe nature, and they will become more aware of, and empathetic to, the plants and animals that share our world.

**Suggested grade levels: PreK - 5th**



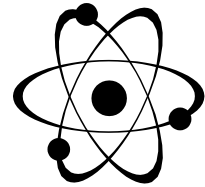
# Programs to Explore

On-site elementary programs are typically two hours in length. Outreach programs are one hour in length. Most programs include an outdoor component (on-site only), which is often spent on an accessible nature trail. Please dress appropriately!

## Fun-damental Physics

Students will participate in experiments that explore the science of physics.

**Suggested grade levels: 3rd - 5th.**  
**\*School is required to bring at least six extra adults for help with this program.**



# Special Field Trips for Elementary Students

## Archery

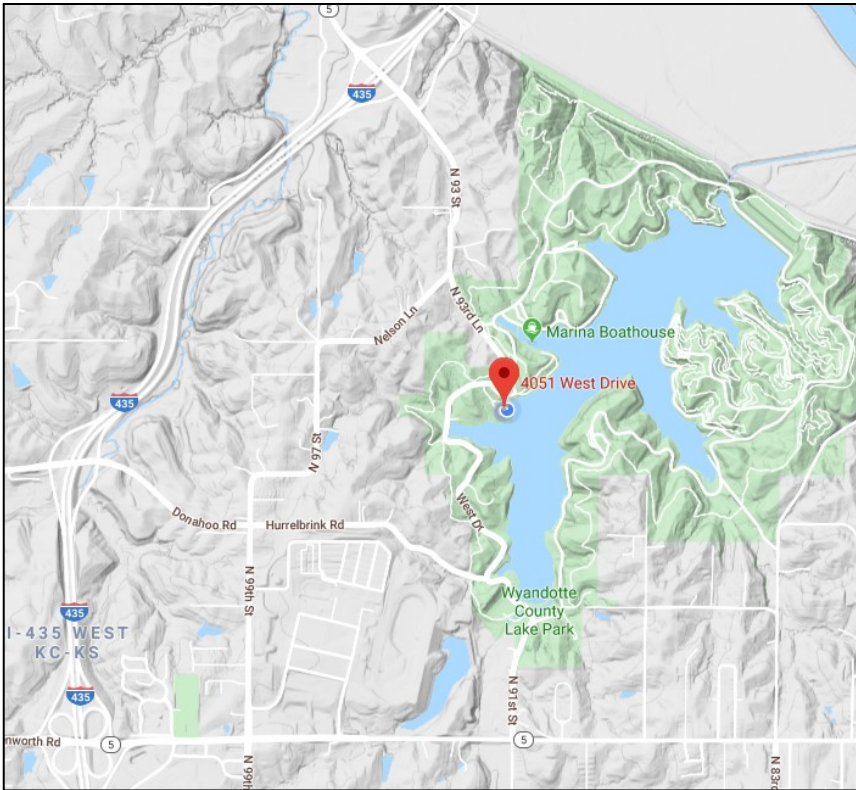
This program follows NASP regulations (National Archery in the Schools Program) and teaches students the basics of archery. After students learn range safety, proper archery technique and basic shooting skills, they will practice on our indoor range then participate in some fun archery games!

**Grade levels: 3rd -5th.**





# Directions to Mr. and Mrs. F. L. Schlagle Library, an Environmental Learning Center



The Mr. and Mrs.  
F. L. Schlagle Library is located in  
beautiful Wyandotte County Lake Park.

The entrance to the park can be  
accessed via N 91st Street and  
Leavenworth Road, via I-435 and  
Wolcott Drive (exit 18) or  
from N 83rd Street.

## **Directions to Mr. and Mrs. F. L. Schlagle Library:**

Take I-435 North to Leavenworth Rd East (Hwy 5).  
East to 91st Street to blinking red light.  
North (left) on 91st Street into lake area.  
Left (West Drive) 1.5 miles around the lake.  
Look for Library Entrance sign on right, just past Shelter # 6.  
Turn right onto drive to library parking lot.

## Alternate Route:

Take I-435 North to Exit 18 (Wolcott Drive) and head East.  
Wind around 1 mile until coming to a Y in the road.  
Keep to the left at the Y (93rd Street) and enter the lake area.  
Continue driving until you reach the stop sign at the bottom of the hill.  
(You should see the ball field in front of you, and a row of mailboxes to your right.)  
Turn right onto the lake road and then left onto the library drive.

## **Hours:**

Monday - Friday 9 am-5 pm  
Third Saturday of every month 9 am-5 pm  
Closed Sunday



For more information please visit [www.kckpl.org](http://www.kckpl.org), call us at **913-295-8250 option #2**,  
or email us at [flsinfo@kckpl.org](mailto:flsinfo@kckpl.org).